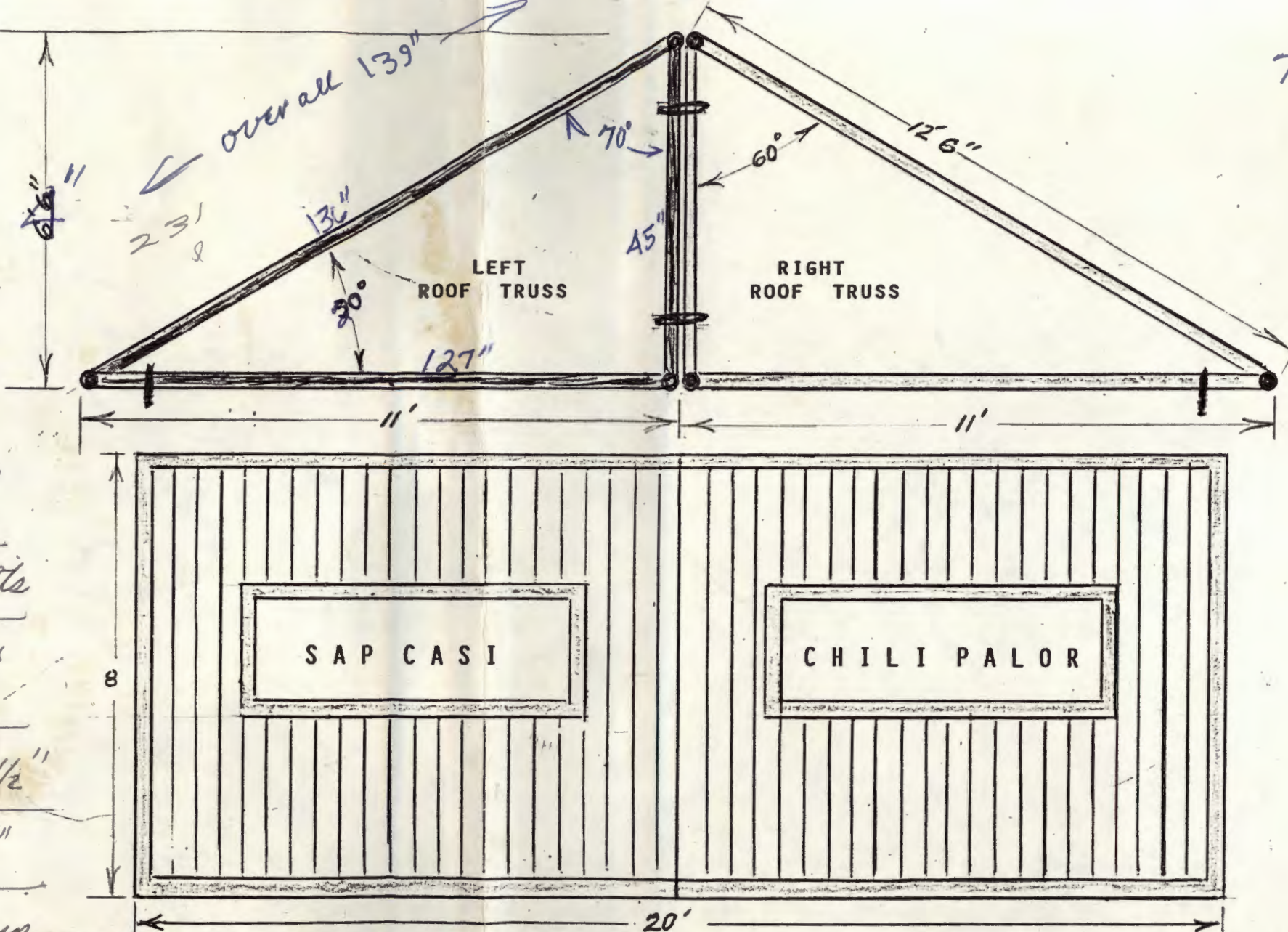


- 7 pcs 136" long 111)
- 7 pcs 127" long 114
- 7 pcs 45" long
- 7 pcs 28" long
- 28 pcs 18" long 77"

Klaus Jurner
533-7101 work

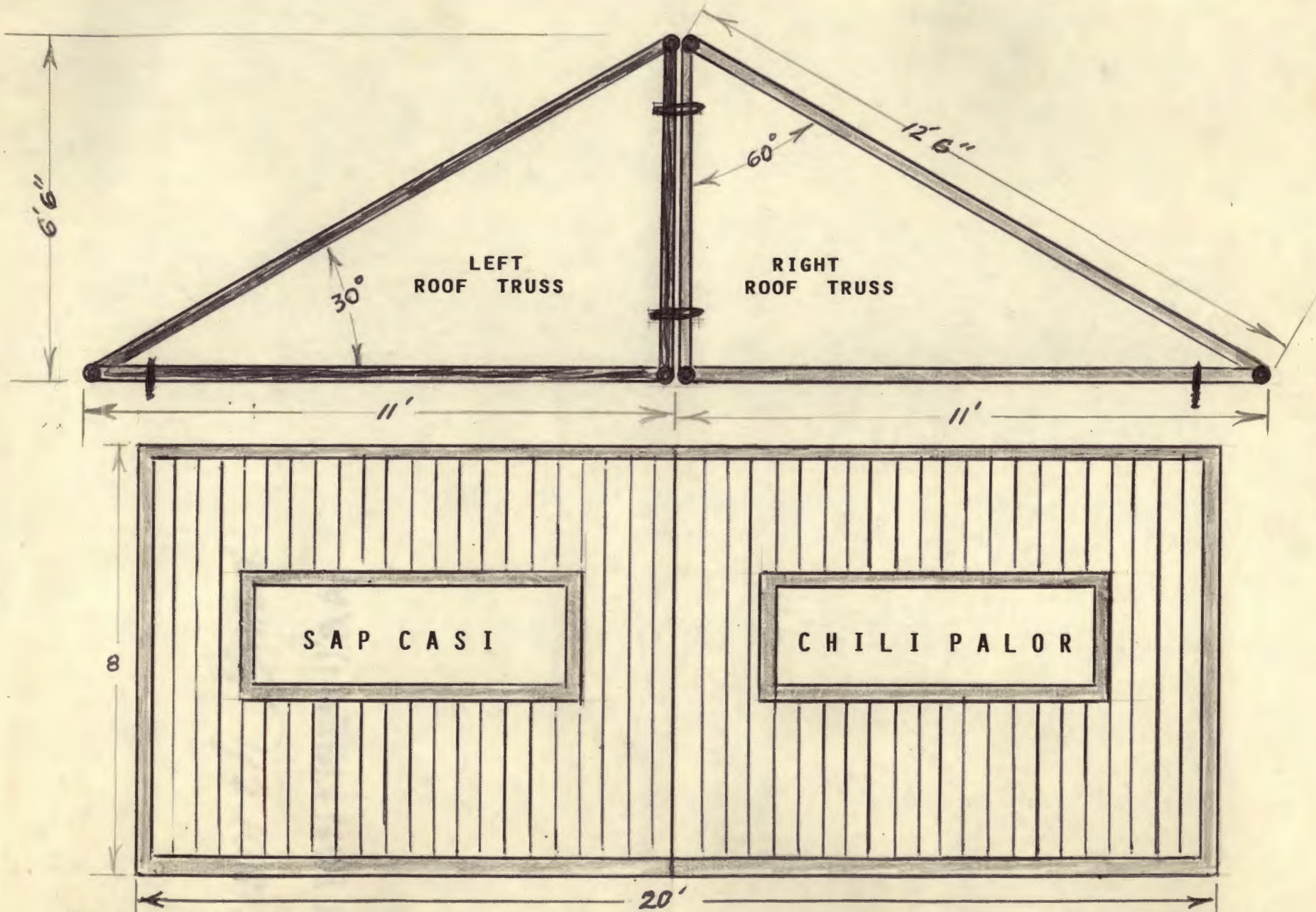
- 20 ea chain link top fence rail 1 1/4"
- 16 ea 5/16" x 4" U bolts
- 24 fence rail couplers 1 1/2" x 6"
- 4 eye bolts 1/4" x 2 1/2"
- 10 eye bolts 1/4" x 4"
- 2 ea left-right take up

- 50' flex cable (small)
- 4" ea cable clamps



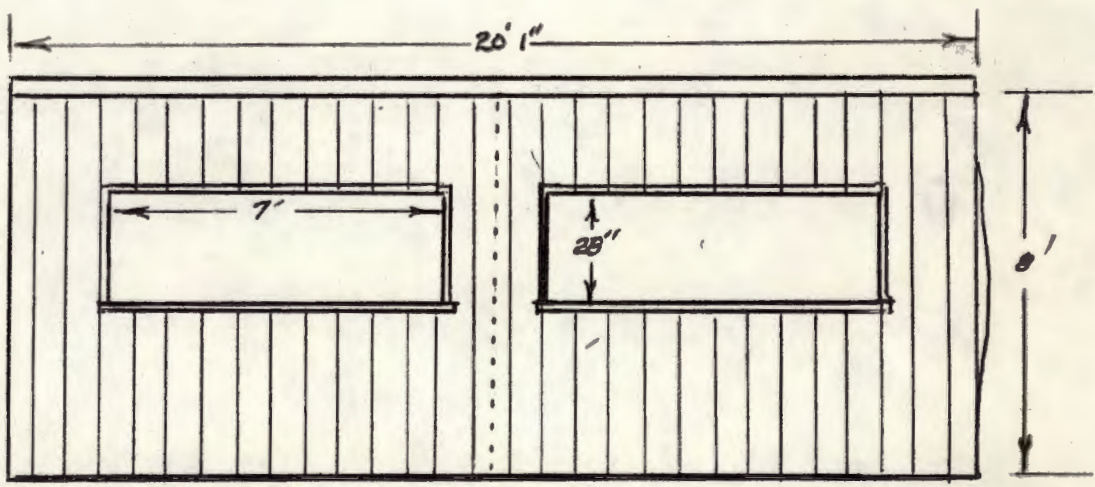
MANUFACTURE EIGHT TRIANGLE ROOF TRUSSES 11' WIDE X 6'6" HIGH X 12'6" USING 1 1/4" CHAIN LINK FENCE RAIL. AT EACH END OF TRUSS WELD A 1 1/2" X 6" RAIL CONNECTOR IN VERTICLE POSITION TO BE USED TO CONNECT THE TRUSSES 6'8" APART. BOLT THE TWO ROOF TRUSSES IN CENTER TO FORM A GABLE ROOF TRUSS THE TOTAL ROOF EXPOSURE WOULD BE 20' X 25' OR 500 SQ. FT. THE CHILI FLOOR AREA IS 400 SQ. FT. BOLT THE ROOF TRUSSES TO THE TOP OF THE CHILI BOOTH WALLS WITH U BOLTS.

J. SMITH
5-17-92



MANUFACTURE EIGHT TRIANGLE ROOF TRUSSES 11' WIDE X 6'6" HIGH X 12'6" USING 1½" CHAIN LINK FENCE RAIL. AT EACH END OF TRUSS WELD A 1½" X 6" RAIL CONNECTOR IN VERTICAL POSITION TO BE USED TO CONNECT THE TRUSSES 6'8" APART. BOLT THE TWO ROOF TRUSSES IN CENTER TO FORM A GABLE ROOF TRUSS THE TOTAL ROOF EXPOSURE WOULD BE 20' X 25' OR 500 SQ. FT. THE CHILI FLOOR AREA IS 400 SQ. FT. BOLT THE ROOF TRUSSES TO THE TOP OF THE CHILI BOOTH WALLS WITH U BOLTS.

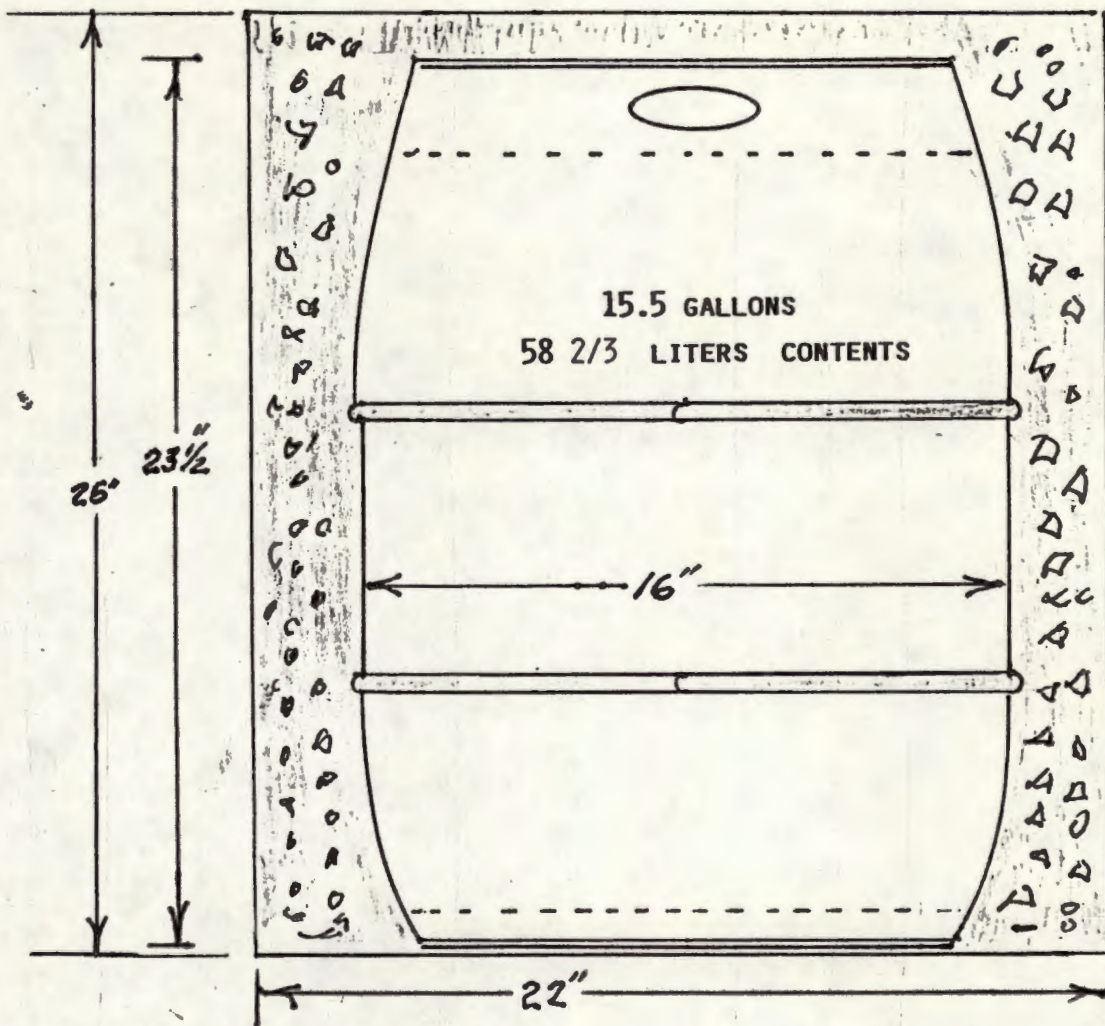
J SMITH
5-17-92



Front Elevation

SAP CASI chili booth

FOLKLIFE BEER BARREL & ICE



THE BEER BOOTH AT FOLKLIFE FESTIVAL

ICE CONSUMPTION HAS BECOME VERY EXPENSIVE FOR SAP CHILI BOOTH SO WE ARE TRYING TO FIGURE A WAY TO SAVE. THE LARGER BEER BARRELS THAT WE USE HAVE 15.5 GALLONS OF LIQUID. SOME OF THE BARRELS ARE STRAIGHT UP AND DOWN AND SOME ARE POT BELLY AS THE ONE SHOWN ABOVE. THE ICE HOLDING BARREL IS 22" WIDE AND ABOUT 26" TALL.

SOME THOUGHT HAS BEEN GIVEN TO MAKING AN INSULATED BARRELL FOR THE BEER KEG TO SET IN BUT WE DO HAVE A SPACE PROBLEM IN THE BOOTH. COORS BEER SUGGESTED HAVING AN INSULATED BLANKET MADE TO WRAP THE ICE BARRELL AND COVER THE TOP.

REFRIGERATION IS NOTHING MORE THAN A TRANSFER OF HEAT AND MANY PLANTS HAVE A CHILLED WATER SYSTEM PICKING UP HEAT. FOR THIS REASON I BELIEVE WE ARE LETTING THE BEER ATTENDENS DRAIN THE WATER TO OFTEN CAUSING THE ICE TO MELT MORE QUICKLY.

SUGGESTIONS WELCOMED

JOE SMITH
344-1116

Joe Smith

FEB. 20, 1993

DAVID TURNER,
CHAIRMAN SAP CHILI BOOTH AT FOLKLIFE
DAVE:

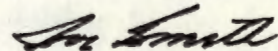
WE HAVE DISCOVERED THAT ONE SIDE OF OUR CHILI BOOTH IS 252" LONG AND THE OTHER SIDE IS 242" LONG. WE NEED TO ADD A 10" EXTENSION TO THE SHORT SIDE. BY DOING THIS OUR PIPE FRAME FOR THE ROOF WILL FIT THE WALLS CORRECTLY. ALSO WE CUT OFF ONE OF THE 77" PIPES LAST YEAR TO MAKE THE FRAME FIT BETTER. WE WOULD NEED AN ADDITIONAL FENCE RAIL PIPE FOR THIS SHORTENED ONE.

ANOTHER SUGGESTION IS TO PLACE SOME TYPE ROLLER ON ONE WALL SO WHEN THE PIPE FRAME IS ASSEMBLED THE ROLLERS WILL ASSIST IN STARTING THE FRAME OVER THE WALLS.

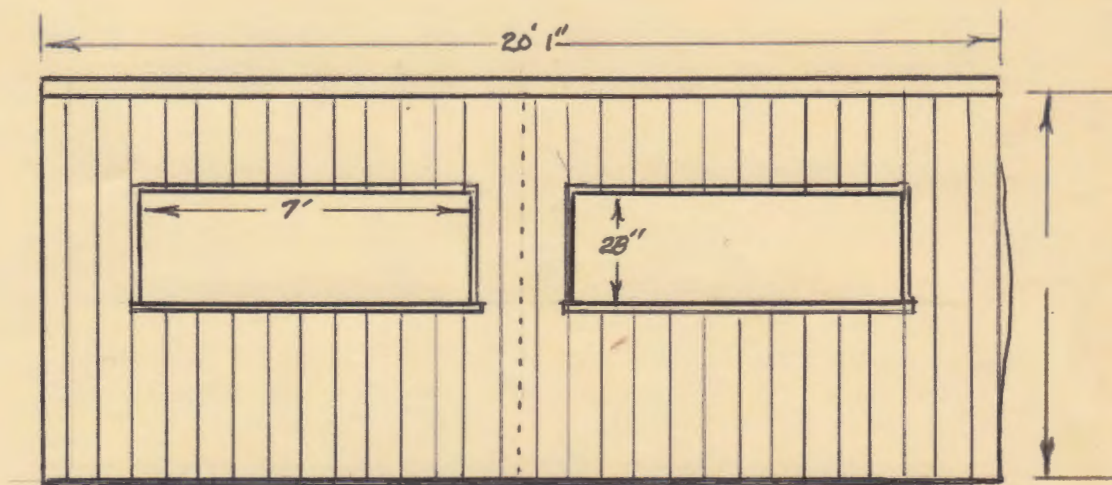
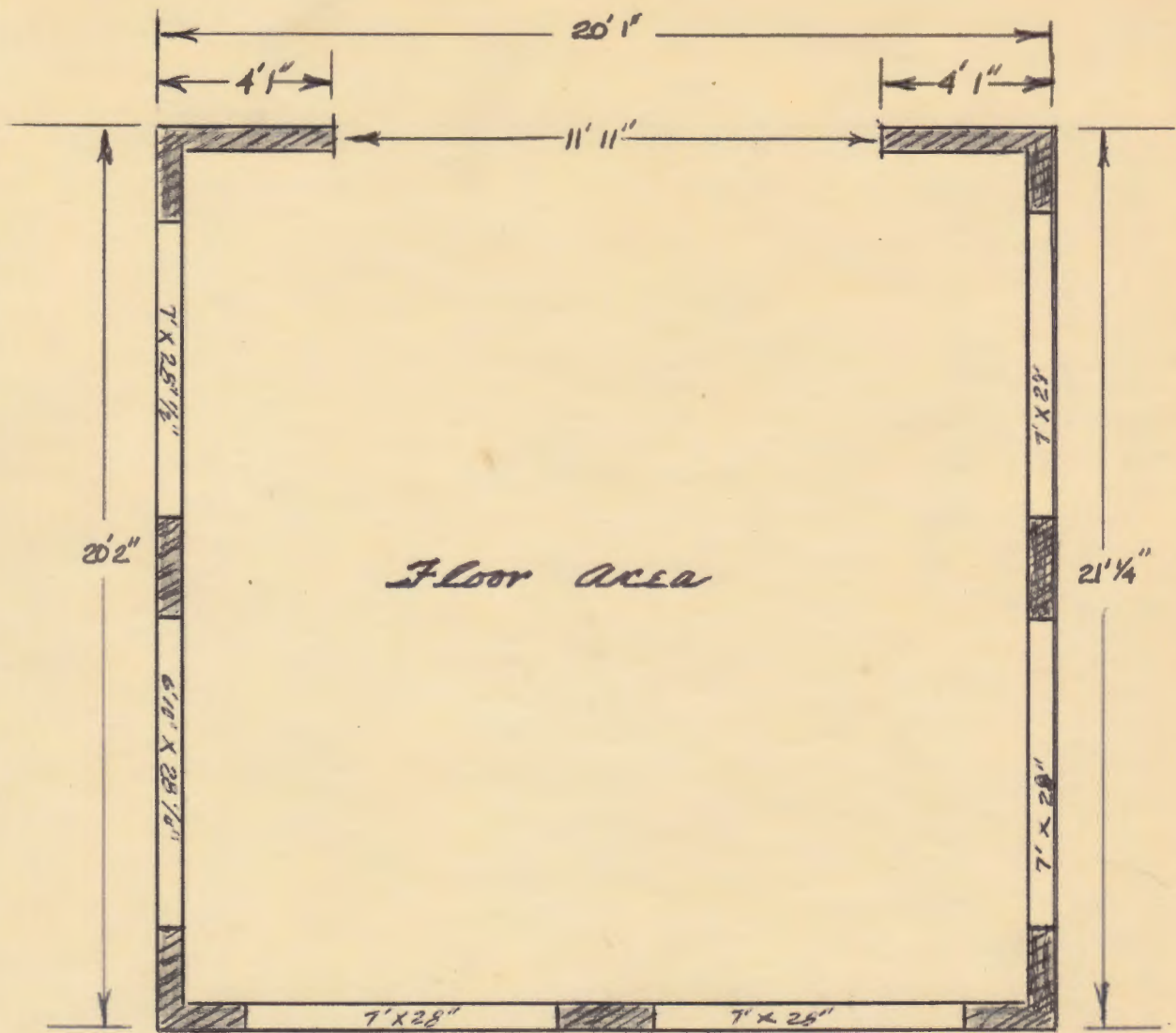
IN ADDITION I BELIEVE IF WE ARE TO ASSEMBLE THE ROOF ON THE GROUND WE NEED TO ADD TWO MORE CABLES AT THE LOWER EVE TO HOLD THE FRAME TOGETHER WHILE RAISING IT OVER THE WALL.

PERHAPS WE NEED TO BUY A 12' FOOT STEP LADDER AND ASSIGN IT TO SOME MEMBER FOR SAFE KEEPING. WE ALWAYS NEED ONE FOR BOOTH SETUP.

SINCERLY



JOE SMITH



Front Elevation

SAPGAS chili booth